

Long-Range 3D Scanning

GKS Services specializes in providing 3D scanning and as-built models to clients worldwide. Our engineers have been providing solutions to a variety of industries for 30 years.

Applications for Long-Range Scanning include: Marine & Offshore; Power Generation; Petrochemical; Mining & Tunnels; Forensics & Accident Reconstruction; Construction, Architecture, & Surveying; Historical Preservation; Turbine Alignment; Simulations; Movie Productions; Rollercoasters & Amusement Parks; Video Gaming Industry; Sporting Facilities; and On/Off Shore Platforms.



What is Long-Range 3D Scanning?

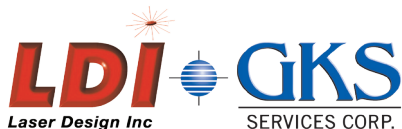
A ground-based technique for collecting **3D data of large-scale, complex entities**. Both the **interiors and exteriors** can be scanned, as well as natural environments for surveying and design purposes.

3D Long-Range Scanning Provides:

- On-site 3D scanning of virtually unlimited size
- Measure 360° by 320°, 75 meter in one setup. Accuracy of +/- 2mm to a distance of 25 meters away.
- Works in virtually any condition: broad daylight, dark of night, indoors, and outdoors
- Scans in full color

About Laser Design & GKS Services

For three decades GKS Services and Laser Design have been the standard of excellence for ultra-precise, 3D measurement used for reverse engineering and inspection.



gks.com/large • 952-884-9648 • info@gks.com

VIDEO

Watch a Long-Range 3D Scanning video on your smartphone (download a scan app to view).



WHAT OUR CUSTOMERS ARE SAYING

"Laser scanning easily reduces the time required for reverse engineering by more than 50%. The models produced are also more accurate because 3D scanning generates so many more measurements."

~ P.B. @ U.S. Government

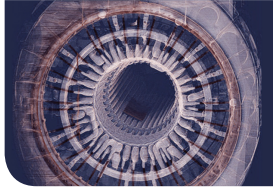
LASER DESIGN & GKS LOCATIONS

Detroit, MI	Minneapolis, MN
Atlanta, GA	Austin, TX
Charlotte, NC	Chicago, IL
Cleveland, OH	Dallas, TX
Denver, CO	Houston, TX
Los Angeles, CA	Trenton, NJ
Niagara Falls, NY	Philadelphia, PA
Seattle, WA	Canada
China	India
Korea	Singapore
Taiwan	Netherlands

Applications of Long-Range Scanning Include:

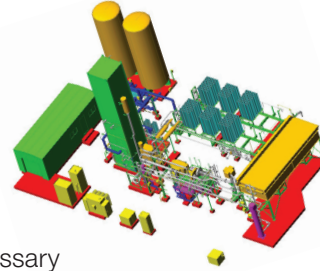
Power Generation

- Keep site documentation up-to-date for compliance with safety requirements
- Scan in: light, dark, indoors, and outdoors
- Receive CAD models of the actual on-site conditions
- Use digital models for measuring piping
- Align turbines using the laser
- Generator outage measurements



Petrochemical

- Document existing pipe work setups and plan for alterations with accurate as-built data
- Eliminate potential collisions and necessary reworks which reduce time required during construction
- Document lifecycle of a plant through repeat scans to detail changes and maintain an accurate record of plant conditions



Forensics & Accident Reconstruction



- Reconstruct and analyze accident sites or crime scenes before they have decayed
- Measure millions of points per minute in all directions so that important measurements are not missed; this is essential in legal cases
- Export data into forensic software creating a realistic view to visually determine sequence of events and causes

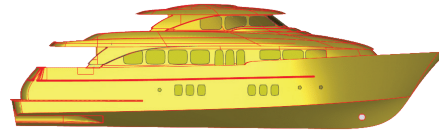
Mining & Tunnels

- Generate complex 3D cavities, digital terrain models, & continuously monitor slope
- Produce accurate drawings for current or theoretical tunnels by capturing the actual tunnel profile to visualize in 3D
- Stockpile volume measurement
- Scan in: light, dark, and dangerous areas



Marine & Offshore

- Hull modeling
- Create a detailed CAD model of a ship's engine room and design a new installation while the vessel is at sea
- Collect as-built geometry that represents the accurate shape of the vessel
- Conduct stability analysis with as-built structure



Construction, Architecture & Surveying

- Safely and effectively measure existing conditions for risk factors
- Efficiently capture existing conditions for inspection without repeat visits to the site
- Enhance digital records with photo-overlay to preserve historic landmarks



Scanner
Rentals
Available

"GKS has always provided exceptional service. They are fast to respond and the supplied data is very clean and organized." ~ B.R. @ Ryder Engineering